

Reopening Schools

We Are Stronger Together

Adam Molloy

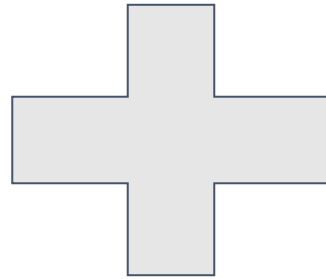
adamcm@leeschools.net



PERSONAL | PASSIONATE | PROGRESSIVE



Essential Collaboration



#LoveLEESchools





Overview

- Reopening Schools Update
- Coping with COVID-19
- SDLC Expansion Plans
- Community School Study
- Questions





Reopening Schools Update

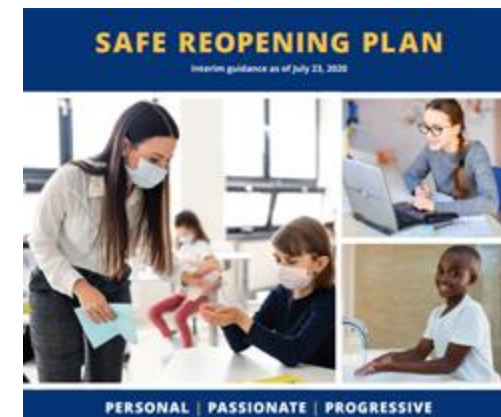
- SDLC reopened schools on 8/31/20
- Reopening models/toolkit
- Technology challenges
- COVID-19 Incident Notification Hotline
- Communication Plan
- Closure Matrix

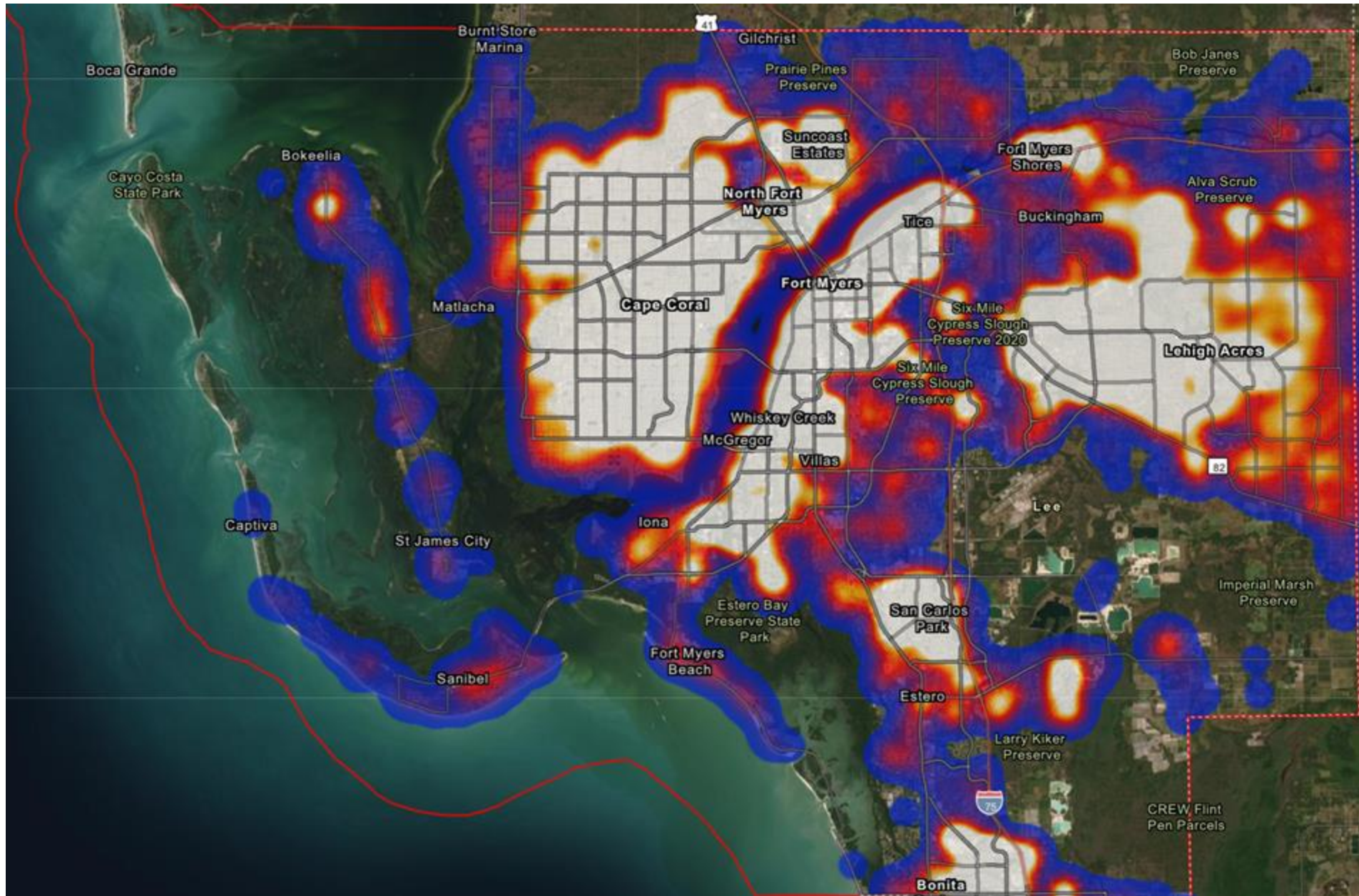




Coping with COVID-19

- Organizational agility
- Reopening Schools Task Force
- Safe reopening toolkit
- Health and safety protocols
- Community Mask Drive
- Support for teachers







SDLC Expansion Plans

- East ES New School (J)
- Gateway HS New School
- Lehigh Acres MS New Campus (MM)
- South ES New School (K)
- South MS New School (NN)





SDLC Expansion Plans

- FMTC refresh
- Franklin Park Rebuild
- James Stephens Pre-K Remodel
- Riverdale HS refresh
- Veteran's Park K-8 campus expansion and PAC





Community School

- Franklin Park Community School
- Campus rebuild including additional community wrap-around services and Pre-K center.
- A new campus is anticipated to open August 2024.





Proximity Plan

- The purpose of the proximity plan is to use community data to organize elementary schools and students into new attendance boundaries.
- The new proximity plan will have the ability to both improve transportation efficiency and address levels of diversity.
- We have been working diligently with Davis Demographics (using the latest GIS technology) on this project.





Questions